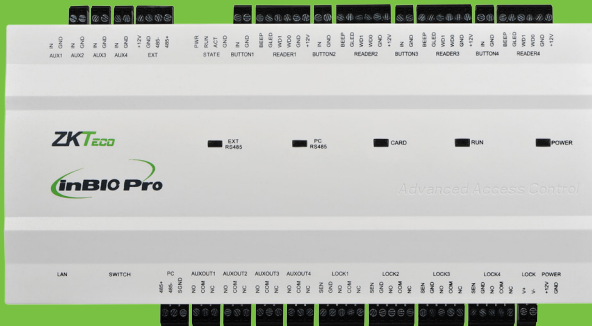


## PRO SERIES



inBio 460-PRO



inBio 260-PRO



inBio 160-PRO

## inBio Pro-Series IP-Based Access Control Panel

**inBio Pro** Series is a next-generation series of fingerprint & card-matching panels having advanced access control features including anti-passback, first-card opening, multi-card opening, duress password entry, embedded card verification and supports real-time Push protocol.



### Choice of Readers:

For fingerprint-matching, select only ZKAccess FR-Series slave fingerprint readers.

Full range of prox card readers supported. ZKAccess KR-Series slave card readers are stylish and waterproof. inBio Pro supports any wiegand-output reader, including HID Prox, iClass, and XceedID Multi-Technology.



### Communication:

inBio Pro panels install easily on your network and support both TCP/IP and RS-485 communication. Auto-discovery tool allows setting and modification of network parameters directly and easily.



### Lowest Total Cost of Ownership:

inBio Pro panel firmware can be upgraded in the field. New controller features can be loaded without any advanced tools, extending and expanding the value of your investment.



### Built-In Advanced Access Control:

Anti-Passback, First-Card Opening, Multi-Card Opening, Duress Password Entry, and Auxiliary Input/Output Linkages are built into the firmware.



### Door Control and More:

Along with relay contacts for controlling door locks, easily programmable auxiliary relays can be used for additional control and interface to lights, alarms, annunciators, intrusion detection panels, or even extra locking devices or gate controllers.



### Options:

inBio Pro panels come in three sizes to suit project needs and reduce the cost of unused capacity. 1-door, 2-door, and 4-door models can be mixed and matched in an optimized system architecture.



### Capacity:

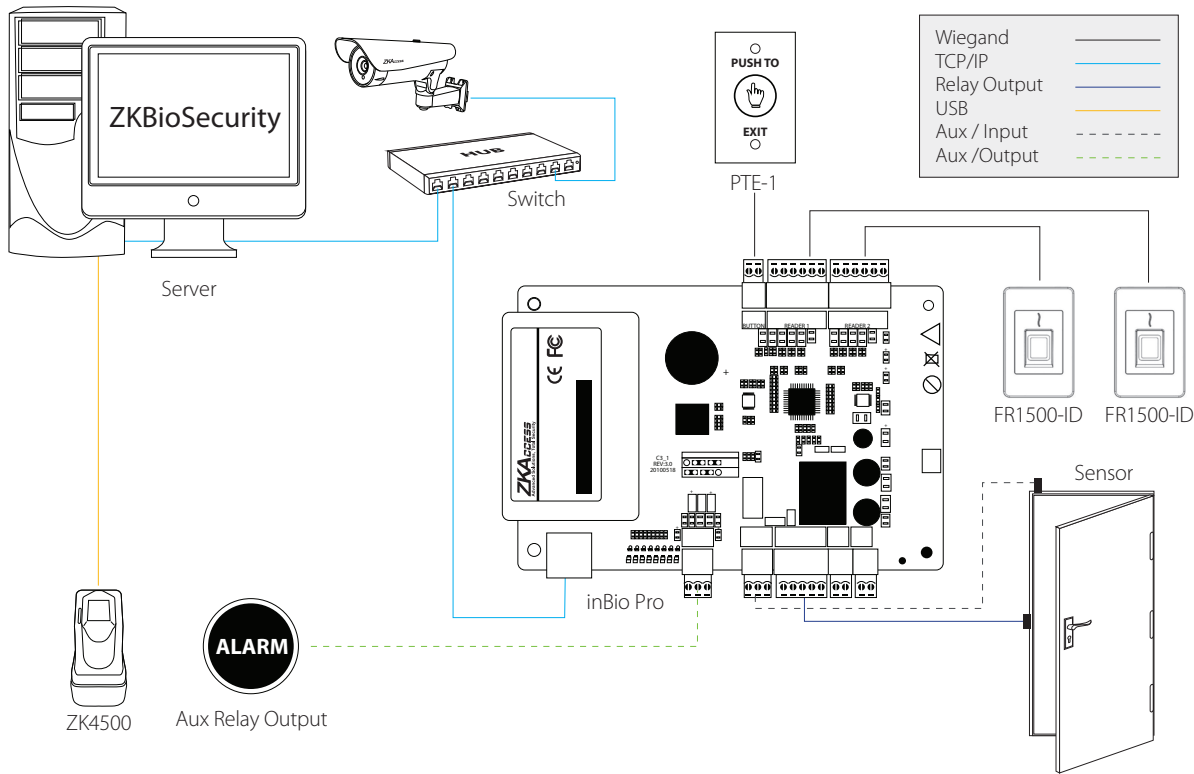
20,000 fingerprints and 30,000 card holders. Panel is backed up in real-time in on-board optional SD card. Data is preserved if power is lost. Panel continues to operate even if network connection is interrupted.



### For Software Developers:

Free SDK is available for integrators and OEM's to integrate the inBio Pro panels with their existing security or personnel management applications. Upon request, ZKAccess can also customize inBio Pro firmware to meet any custom requirements.

## Typical Installation



## Optional Accessories



FR1500-ID



KR500H



KR502H



PTE-1



Prox Card



Proxy Key Fob

## Specification

	inBio 160-PRO	inBio 260-PRO	inBio 460-PRO
Software Compatibility	ZKBioSecurity software, only	ZKBioSecurity software, only	ZKBioSecurity software, only
Number of Doors Controlled	1 Door	2 Door	4 Door
Number of Readers Supported	4 (2 RS-485 readers and 2 Wiegand readers)	8 (4 RS-485 readers and 4 Wiegand readers)	12 (8 RS-485 readers and 4 Wiegand readers)
Types of Readers Supported	26-bit Wiegand, others upon request	26-bit Wiegand, others upon request	26-bit Wiegand, others upon request
Number of Inputs	3 (1 for Exit button, 1 for Door status, 1 for Aux)	6 (2 for Exit button, 2 for Door status, 2 for Aux)	12 (4 for Exit button, 4 for Door status, 4 for Aux)
Number of Outputs	2 (1-from C Relay for Lock and 1-form C Relay for Aux Output)	4 (2-from C Relay for Lock and 2-form C Relay for Aux Output)	8 (4-from C Relay for Lock and 2-form C Relay for Aux Output)
Capacity	20,000 fingerprints / 30,000 card holders	20,000 fingerprints / 30,000 card holders	20,000 fingerprints / 30,000 card holders
Log Events Capacity	100,000	100,000	100,000
Weight	9 lbs (4.08 kg)	10 lbs (4.5 kg)	10 lbs (4.5 kg)
Communication	TCP/IP	TCP/IP	TCP/IP
Enclosure	Powder Coated Aluminium	Powder Coated Aluminium	Powder Coated Aluminium
Mounting	Wall Mount or DIN rail	Wall Mount or DIN rail	Wall Mount or DIN rail
Recommended Power Supply	12V DC, 1.5A	12V DC, 1.5A	12V DC, 1.5A
Dimensions	7.5 x 5.5 inches (190 x 140 mm)	7.5 x 5.5 inches (190 x 140 mm)	9 x 5.5 inches (229 x 140 mm)

