

FR1500-WP

Flush-Mounted RS-485 Fingerprint Reader



Features

- Single gang Standard junction box installation.
- Flush-Mounted Design for neat installation.
- RS-485 Communication Interface.
- BioID Fingerprint Sensor; SilkID Fingerprint Sensor (Optional).
- Stainless Steel Front casing.
- Fingerprint Protective Cover.
- IP65 Waterproof

Specifications

Additional Info

Working Temperature: -10 °C ~ 45 °C
 Working Humidity: 20 ~ 95%
 Dimensions(LxWxH): 121.3 × 77.3 × 38 mm
 Algorithm: ZKFinger v10.0

Power Supply

Operating Voltage 12V DC
 Stand-by Mode Power Consumption: 12V*60mA=0.72W
 Peak Current of Fingerprint scanning: 140mA

Hardware

1.0 GHz CPU
 ZKBioID Sensor
 Buzzer Prompt
 Three-color Indicator Light

Standard Features

125KHz RFID Card

Communication

RS485

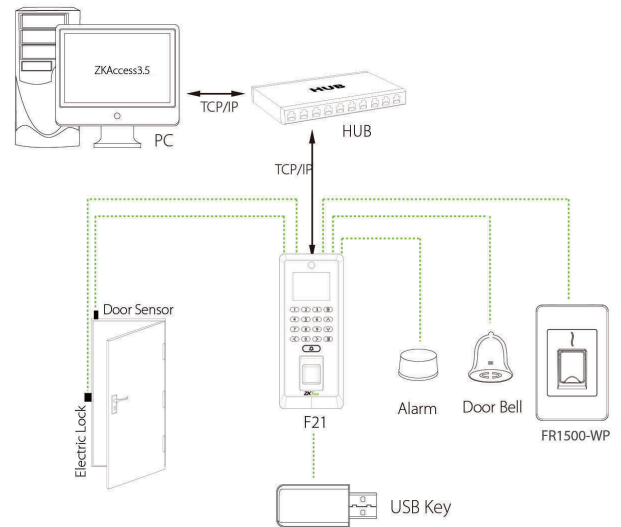
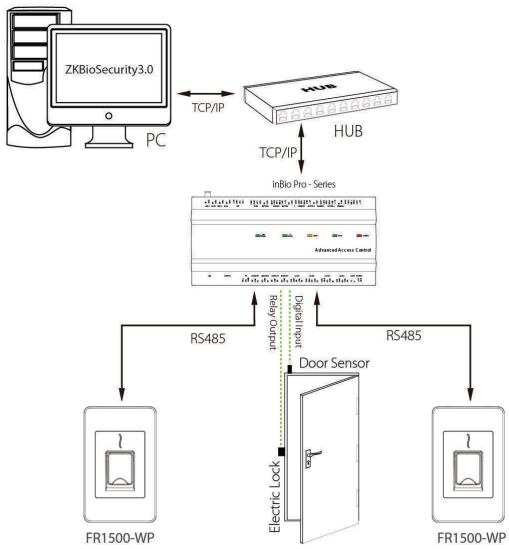
Compatibility

inBio/inBioPro Controllers
 Standalone Fingerprint Devices

Optional Features

125KHz HID Prox Card
 13.56MHz MifareCard(S50 / S70)
 13.56MHz HID Iclass Card

Configuration



Dimensions (mm)

