



YLI ELECTRONIC

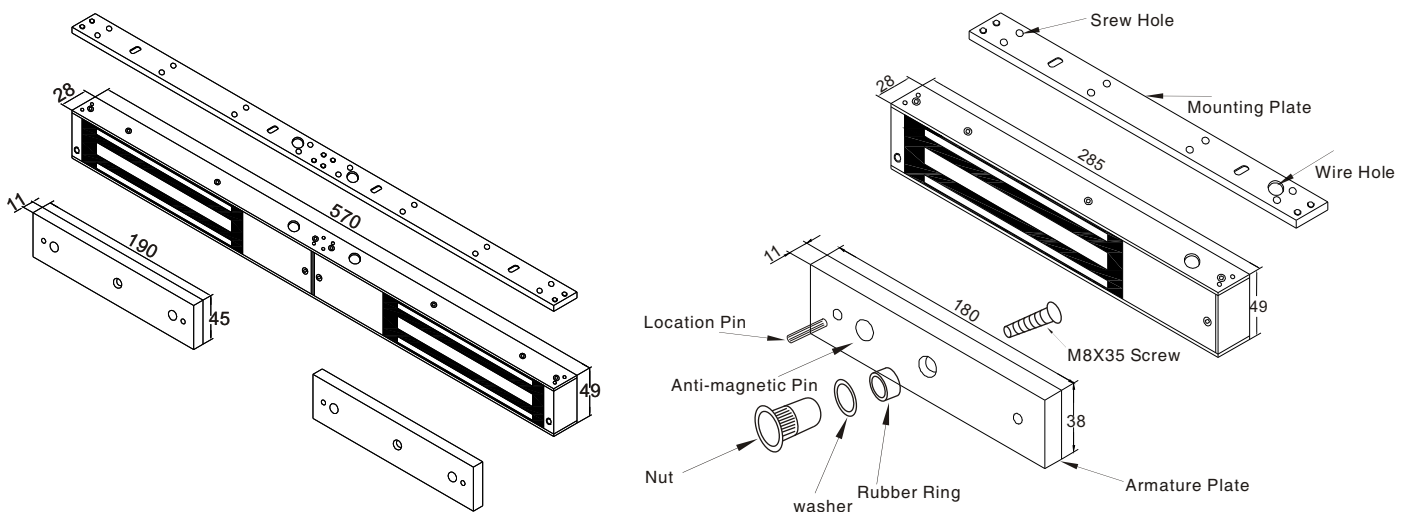
Magnetic Lock (350kg)



Specification

| Model | Size(unit:mm) | Voltage | Current | Holding Force | Lock Signal | Door Signal | Door |
|-----------------|---------------|----------|----------------------------|-------------------|-------------|-----------------------|-------------|
| YM-350 | 285Lx49Wx28H | 12/24VDC | 12V/480mA 24V/240mA | 350kg(800Lbs) | No | No | Single Door |
| YM-350D | 570Lx49Wx28H | 12/24VDC | 12V/480mAx2 24V/240mAx2 | 350kgx2(800Lbsx2) | No | No | Double Door |
| YM-350(LED) | 285Lx49Wx28H | 12/24VDC | 12V/480mA 24V/240mA | 350kg(800Lbs) | Yes | No | Single Door |
| YM-350(LED)-DS | 285Lx49Wx28H | 12/24VDC | 12V/480mA 24V/240mA | 350kg(800Lbs) | Yes | NO(B),NC(R) COM(Y) | Single Door |
| YM-350D(LED) | 570Lx49Wx28H | 12/24VDC | 12V/480mAx2 24V/240mAx2 | 350kgx2(800Lbsx2) | Yes | No | Double Door |
| YM-350D(LED)-DS | 570Lx49Wx28H | 12/24VDC | 12V/480mAx2 24V/240mAx2 | 350kgx2(800Lbsx2) | Yes | NO(B),NC(R) COM(Y) | Double Door |
| YM-350T(LED) | 285Lx49Wx28H | 12/24VDC | 12V/480mA 24V/240mA | 350kg(800Lbs) | Yes | No | Single Door |
| YM-350TD(LED) | 570Lx49Wx28H | 12/24VDC | 12V/480mAx2 24V/240mAx2 | 350kgx2(800Lbsx2) | Yes | No | Double Door |

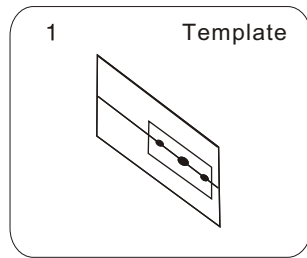
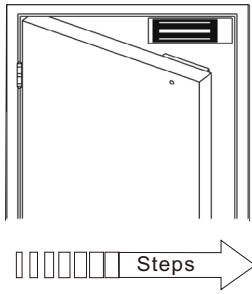
Diagram(unit:mm)



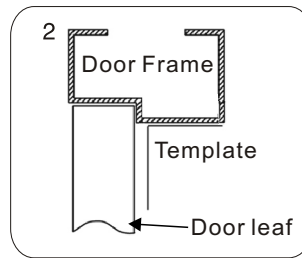
⚠ Cautions:

- The screw of armature plate should not be fixed too tight. Proper elasticity should be guaranteed for the rubber ring so that the armature plate can adjust itself to the appropriate position.
- Check the jumper's position before connecting. Figure out it represents 12VDC or 24VDC.

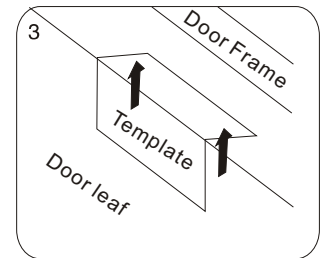
Installation



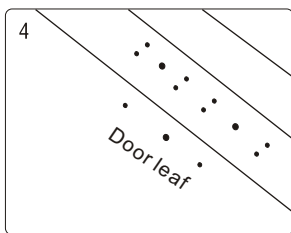
1 Template
Fold the plate to 90° .



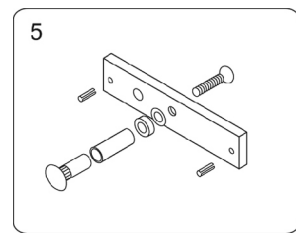
2 Door Frame
Template
Door leaf
Close the door first, then place the upper side of template on door frame, while adjust the left side next to the door leaf.



3 Door Frame
Template
Door leaf
Mark screw positions of armature plate and magnetic lock on door leaf and door frame respectively.

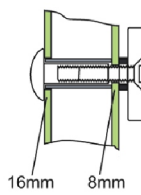


4 Door leaf
Drill holes based on the marked positions.

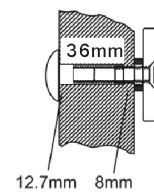


5
Make a combination based on the picture.

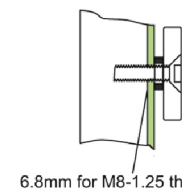
Hollow Metal Door Wooden Door Metal Surface Door



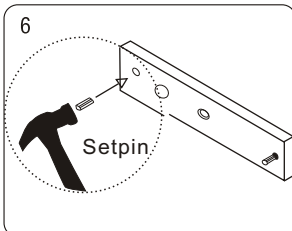
16mm 8mm
Drill a hole
Inside: Diameter is 8mm
Outside: Diameter is 16mm



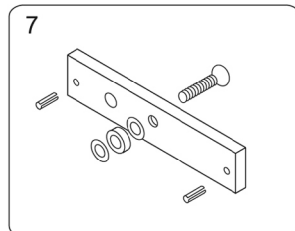
36mm 8mm
Drill a hole
Inside: Diameter is 8mm
Outside: Diameter is 12.7mm



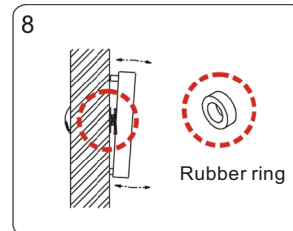
6.8mm for M8-1.25 thread
Inside: Drill a hole diameter is 8mm folding the plastic straightpin



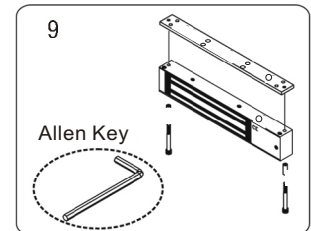
6 Setpin
Strike the pin into the armature plate slightly (to avoid movement).



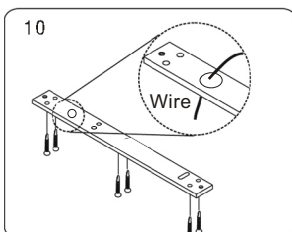
7
Make a combination based on the picture (add washer accordingly). The rubber ring must be added.



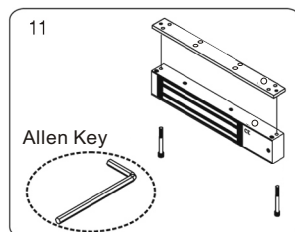
8 Rubber ring
Place the rubber ring between armature plate and door leaf.



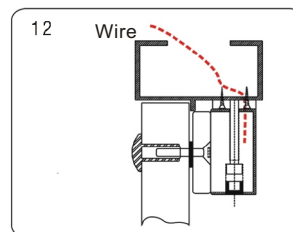
9 Allen Key
Use Allen key to remove the mounting plate from lock body.



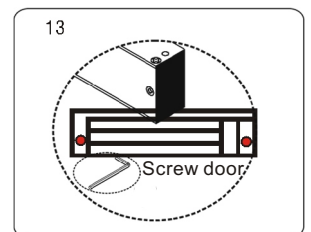
10 Wire
Fix the mounting plate on the door frame according to the holes drilled earlier.



11 Allen Key
Use Allen key to screw the lock body on the mounting plate.



12 Wire
Close the door to test holding force. The angle between armature plate and magnetic lock can be adjusted by adding or reducing washers.



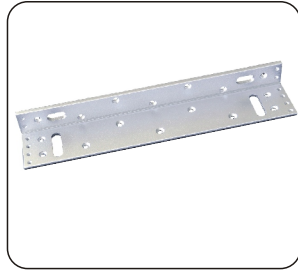
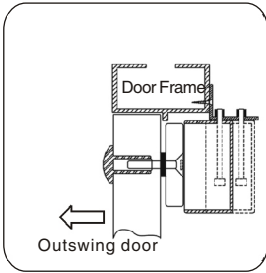
13 Screw door
After all the appropriate procedures, the holding force can be maximized. Finally, fix the tamper screw.

Bracket Installation

Different brackets are available according to different types of doors. For example, narrow door, frameless glass door and inward opening door.

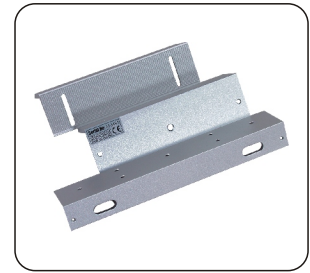
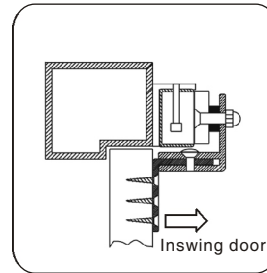
L Bracket-For outward opening door

When the door frame thickness is less than 42mm, L bracket is needed.



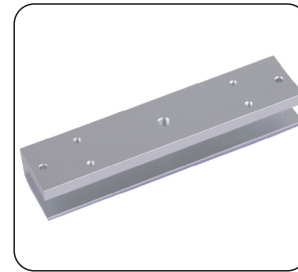
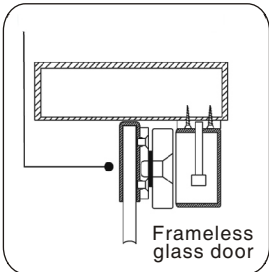
ZL Bracket-For inward opening door

For inward opening door, ZL bracket is needed.



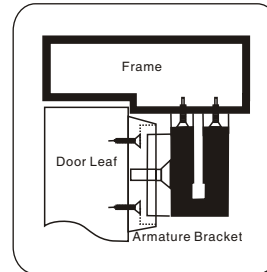
U Bracket

For the frameless glass door. U bracket is needed.

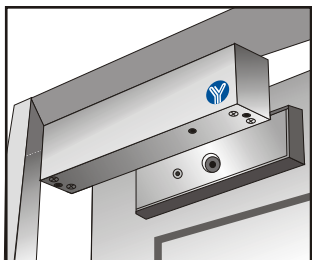


I Bracket for armature plate

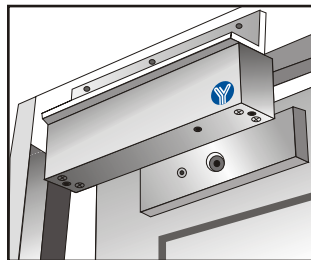
When the door frame is too thick, I bracket is needed.



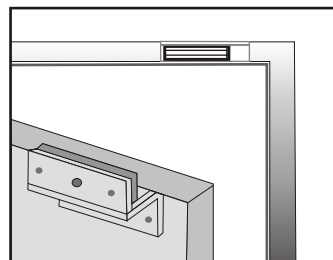
Installation Instruction



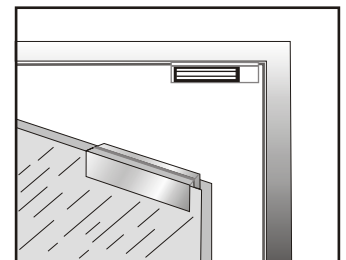
Demonstration of I Bracket Installation



Demonstration of L Bracket Installation



Demonstration of ZL Bracket Installation



Demonstration of UL Bracket Installation

Circuit Board Diagram

A. 12VDC Input:

Required power 0.48Amp(Minimum).

Connect the positive(+)lead from a 12VDC power source to V +.

Connect the ground(-)lead from a 12VDC power source to V -.

Check jumper for 12 VDC operation.

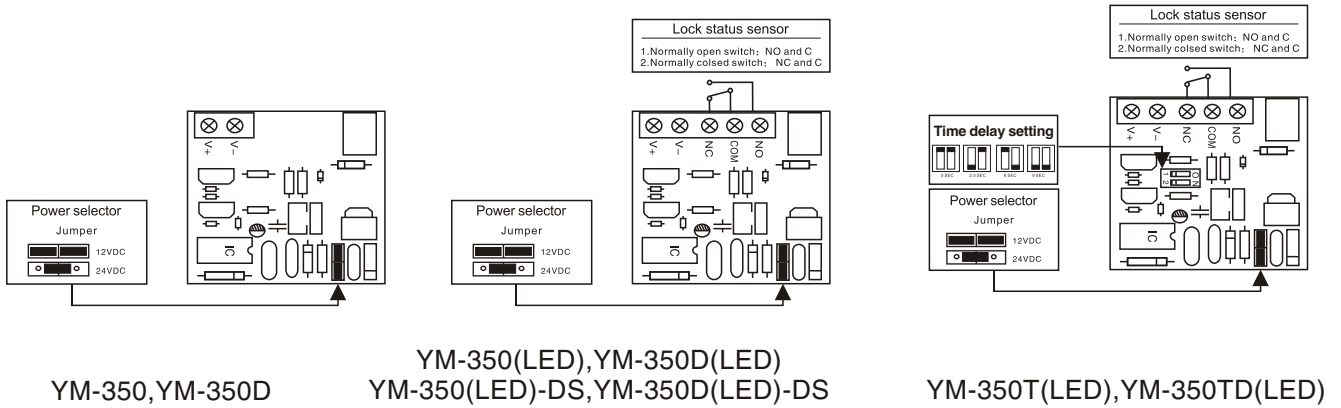
B. 24VDC Input:

Required power 0.24Amp(Minimum).

Connect the positive(+)lead from a 24VDC power source to V +.

Connect the ground(-)lead from a 24VDC power source to V -.

Check jumper for 24 VDC operation.



Wire Connection

