



YLI ELECTRONIC

# Door Loop for Exposed Mounting

Model: DLK-401/403A/403B/403C



## Basic Instruction

Door loop is made of excellent material, Seiko quality, Special design, Applicable to use for access control, to protect the wire when install the electric lock, magnetic contact, alarm button on the door, convenient and beautiful.

## Specification

### DLK-401

Size: 480Lx13W(mm)DIA  
Suitable Range: Prevent the wire from malicious damage  
Standard Structure: Alloy Material Thickened Ripple Tube  
Finished for Shell: Painted by high temperature  
Weight: 0.27kg

### DLK-403B

Size: 410Lx13W(mm)DIA  
Suitable Range: Prevent the wire from malicious damage  
Standard Structure: Alloy Material, Thickened Ripple Tube  
Finished for Shell: Painted by high temperature  
Weight: 0.09kg

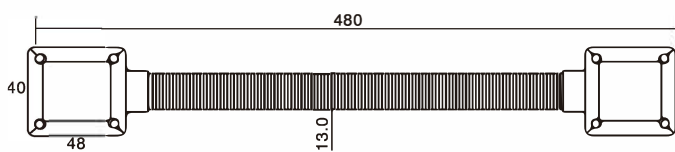
### DLK-403A

Size: 410Lx8W(mm)DIA(other size is optional)  
Suitable Range: Prevent the wire from malicious damage  
Standard Structure: Alloy Material, Thickened Ripple Tube  
Finished for Shell: Painted by high temperature  
Weight: 0.078kg

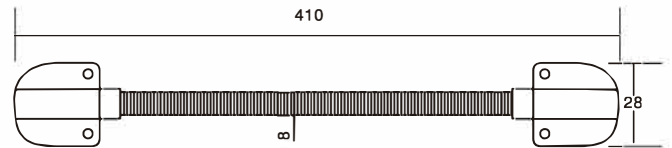
### DLK-403C

Size: 435Lx19.5W(mm)DIA  
Suitable Range: Prevent the wire from malicious damage  
Standard Structure: Alloy Material, Thickened Ripple Tube  
Finished for Shell: Painted by high temperature  
Weight: 0.15kg

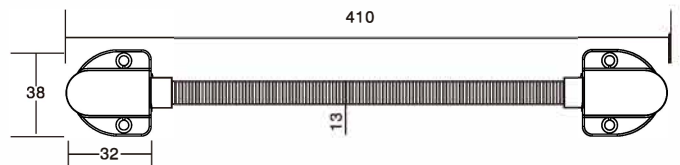
## Installation



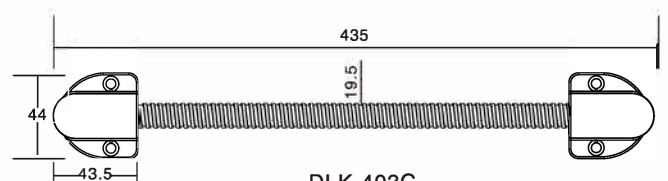
DLK-401



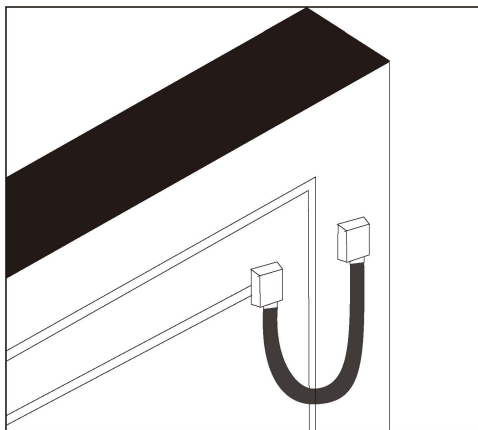
DLK-403A



DLK-403B



DLK-403C



Installation

We create security